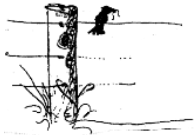


The Fence Post



Volume 24 Edition 56 26/10/2022 \$1.50

Voluntarily published in Narembeen

Registered by Australia Post Publication No PP 100002066

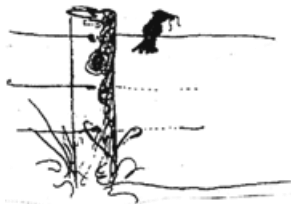
P.O.Box 7, Narembeen W.A. 6369

Phone (08) 90647055

Email: fencepost@westnet.com.au



The Fence Post - Informing the people of Narembeen since 1978



THE FENCE POST INC

PO Box 7, Narembeen, WA. 6369

9064 7055

fencepost@westnet.com.au

*** DEADLINE 10.30 AM TUESDAY ***

OFFICE HOURS: Tuesday 8:30 - 12pm

News items or payments may be left at the front desk of the CRC

when the Fence Post office is closed.

Advertising Rates 2022

	B&W	Colour		B&W	Colour
Small ads up to ¼ Page	\$10	\$15	One Third Page	\$12	\$22
One half Page	\$17	\$27	Two Thirds Page	\$22	\$37
Full Page	\$32	\$52			

PREFERRED FORMAT– JPG, WORD, PUBLISHER OR PDF

ANNUAL SUBSCRIPTION RATES 2022

DUE 1st March

Local and Online \$66

Mailing \$110



Online payments 306-026 - 543 1678

EDITORS

Gina DeLuis, Sherrie Heather, Lorraine Lethlean,
Maxine Miolini (Editor-in-Chief), Kellie Mortimore, Jodie Batty

ROSTER

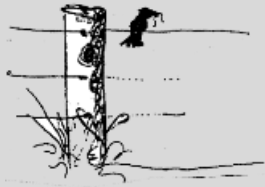
Date	Editor	Typist	Ads
1/11/2022	Jodie Batty	Darien Pascoe	Noela Cole
8/11/2022	Maxine Miolini	Rhonda Cole	Sam Woodfield

The Fence Post is a weekly (45 weeks of the year) voluntary publication in A4, printed mainly in black and white, the email edition is in colour. The newspaper is printed by our local CRC on a Wednesday. There are no summer holiday editions. Advertisements received by email will be invoiced to that address.

Disclaimer

The views expressed in articles in this newspaper are not necessarily the views of the Editor or other volunteers who produce this newspaper. The Editor has the right to withhold, edit or abbreviate any items.

- Life Member of The Fencepost IRIS BRISTOW -



Over the Fence....

A very proud moment for Paul Hudnott (Danelle Fricker’s husband) at the weekend. Paul was the winner of the walk up section at Nambung Country Music Muster for his original songs and his song writing. Two of Paul’s original songs are about Narembeen and Emu Hill when Narembeen was first settled in 1910. Congratulations Paul.

Visiting family this week was Susan Wilkins (Lethlean), daughter Teagan Lister and granddaughter Ada. They kept Michael busy for a few days.



FREE 6 Week Program

STRONGER COMMUNITY

TIMETABLE

DATE/TIME	LOCATION	WORKOUT	INTENSITY
Tue 18 Oct 5.30pm	Walker Lake	Circuit	Low-Medium
Tue 25 Oct 5.30pm	Oval	Circuit	Low-Medium
Tue 1 Nov 5.30pm	Oval	Circuit	Low-Medium
Thurs 10 Nov 11.30am	Pool	Aqua Aerobics	Medium
Thurs 17 Nov 11.30am	Pool	Aqua Aerobics	Medium
Thurs 24 Nov 11.30am	Pool	Aqua Aerobics	Medium

DATE/TIME	LOCATION	WORKOUT	INTENSITY
Thurs 20 Oct 6pm	Oval	Circuit	Medium-High
Thurs 27 Oct 6pm	Oval	Boxing	Medium-High
Thurs 3 Nov 6pm	Oval	Bootcamp	Medium-High
Tues 8 Nov 6pm	Oval	Boxing	Medium-High
Tues 15 Nov 6pm	Oval	Circuit	Medium-High
Tues 22 Nov 6pm	Oval	Bootcamp	Medium-High

For all Women aged 18 and above

To register:
 Call 9064 7055
 Email crcreception@narembeen.wa.gov.au

Registrations close Friday, 14 October 2022



MT WALKER SPORTS CLUB

CAKE STALL

FRIDAY 28.10.22
FROM 9AM
NAREMBEEN POP UP SHOP

Congratulations to Dean and Melanie

Dean and Melanie were married on the 8th of October, 2022 at Barton Park in York.

Parents of the groom are Graeme and Helen Williams (Geraldton) and parents of the bride are Justin and Sharon Baldwin (Narembeen).

110 guests, from Queensland, London and a range of locations across the state, shared in the celebrations.

It was a warm 25 degree day and the couple enjoyed their ceremony amongst the bush on the farm.



ST LUKE'S DAY—October 21, 2022

A beautiful and moving service was held at the Anglican Church hall on Friday, 21st October 2022, with Father Matthew Hodgson as the guest speaker. This was our 5th St Luke's Day; Candles were lit in memory of our loved ones passed. A lovely afternoon tea was held afterwards.

We thank our wonderful and caring staff at Narembeen Hospital who provide the best care and comfort to our loved ones. We respect you all. We bless you all.

Deepest condolences to those whom have recently lost their loved ones.

Thank you to all the members of the Ladies Auxiliary for your support today, and our community members for being present.

Much love and thanks to President Kerry Fricker for organising such a thoughtful service.



THE TRAIN

At birth we boarded the train and met our parents, and we believe they will always travel by our side. As time goes by, other people will board the train; and they will be significant i.e. our siblings, friends, children, strangers and even the love of your life. However, at some station our parents will step down from the train, leaving us on this journey alone. Others will step down over time and leave a permanent vacuum. Some, however, will go so unnoticed that we don't realise they vacated their seats. This train ride will be full of joy, sorrow, fantasy, expectations, hellos, goodbyes, and farewells. Success consists of having a good relationship with all passengers requiring that we give the best of ourselves.



The mystery to everyone is: We do not know at which station we ourselves will step down. So, we must live in the best way, love, forgive, and offer the best of who we are. It is important to do this because when the time comes for us to step down and leave our seat empty we should leave behind beautiful memories for those who will continue to travel on the train of life.

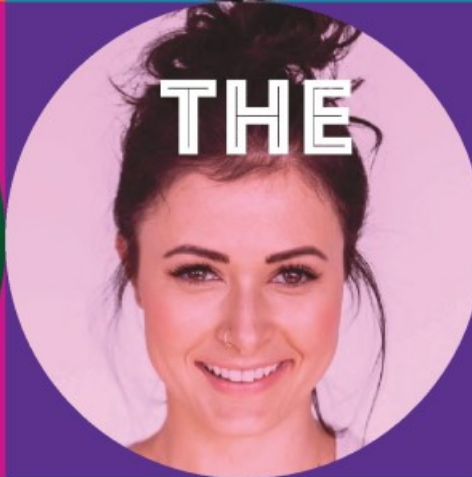
I wish you a joyful journey for the coming years on your

train of life. Reap success, give lots of love and be happy. More importantly, thank God for the journey!

Lastly, I want to thank you for being one of the passengers on my train!



L to R—Carmel Harper, Robyn Henderer, Pat Latham, Annette Main, Di Miolini, Father Matthew Hodgson, Kerry Fricker, Di Pollard, Rhonda Hickey and Susy Padfield.



Presented by:



Australia Day Council of Western Australia

Principal Partner:



Government of Western Australia
Department of Communities

Media Partners:



WAtoday
INDEPENDENT. ALWAYS.

Nominate now

If you know someone, or a group, doing great things in our community, nominate them for a 2023 Australia Day Award, in our four categories.

- > Citizen of the Year
- > Youth Citizen of the Year
- > Senior Citizen of the Year
- > Active Citizenship (Group or Event)

citizenshipawards.com.au | Closing Date: 31 October 2022

Local Government Recognising Community Champions.



NAREMBEEN HISTORICAL SOCIETY (INC)

Back in 2010 the Narembeen District High School students met with some senior community members and recorded their memories. The books were shown at the Centenary Celebrations.

Over the next few weeks we will publish the memories of Mrs Hazel TOOVEY (nee French).

FINAL

AROUND THE HOME

What kind of sports did you partake in out of school?

Tennis. Horse riding. Hockey. Some friends on farms had their own tennis courts, so we had tennis parties and afternoon tea.

What was the most popular sport and how was it played?

The Inter School Sports with Bruce Rock, Shackleton and Ardath. Very competitive. Very popular. Running, long jump, high jump, skipping races. Tennis and football were very popular. Marbles was very popular with the boys.

How many people lived in Narembeen when you were a child?

I think about 1500 in the district.



What memories do you have of your home and neighbourhood? Ready for tennis. Hazel French, Jess Eddy

When I look back I think how free our lifestyles were. No one had much money but we had no peer pressure to have designer clothes and sports gear etc. We made our own fun. We had enough to eat. We had good schooling and were taught to respect ourselves and other people. My home life was excellent and I loved living in Narembeen.

Did you have any pets? What was your first pet and what was its name?

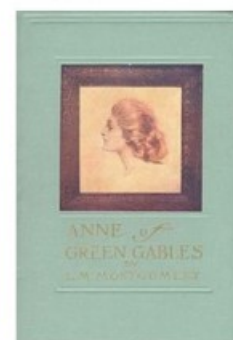
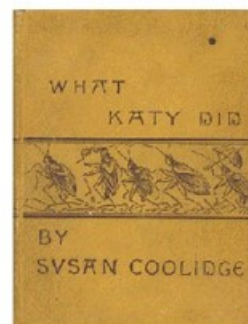
We always had a dog at home. My favourite was a black and white collie called 'Lassie'. We had her for years, she was our first dog.

What was your favourite pet and why?

My other favourite dog was called 'Tippy', she was a small fluffy black "bitzer" and was very cheeky.

Do you enjoy reading books? Which one was your favourite and why? Who was a popular author when you were a child?

Reading was one of my most interesting things to do. My favourites were the Anne of Green Gables series by L.M. Montgomery, What Katie Did by Susan Coolidge and Billabong Series by Mary Grant Bruce. They were all family stories.





NAREMBEEN HISTORICAL SOCIETY (INC)

FINAL

AROUND THE HOME

continued

What kind of toys did you play with as a child? Which one was your favourite and why?

Toys were very scarce when I was small as it was "Depression Years" and not much money for toys. Main toys if any were prams and dolls for girls and lots of homemade toys wooden or knitted. Boys built there own 'go carts' our of kerosene tins and old pram wheels. I mainly received books for presents. I was not really keen on toys.



How did your family earn a living when you were a school student?

My father was a teamster (horses) in his young days and helped build the Wadderin Dam. He then went lumping wheat bags before CBH came into being and then joined CBH going on to head office in Perth. My mother was a very good dressmaker and sewed for the local ladies and girls. She also made some wedding gowns and evening dresses which were long in those days.

What were some favourite past times of yours?

Music, reading, tennis, dancing (old time), running, going out to friends farms on weekends. Sometimes when there was water in the lake the kids would make a tin canoe. We were allowed to play at the lake.



If you lived in town, did you ever visit any of your friends' farms?

I spent a lot of weekends on friends farms or rode my bike out for the day.

Did you have any chores for your parents around the house? If yes, did you get rewarded and how?

I did most of the shopping and helped cart wood up for the fires. Also a few other odd jobs. I got sixpence pocket money and mum and dad paid when I went to the pictures.

Did you ever listen to music on the radio? If yes, did you have a favourite musician or band and why did you like them?



When radio came we called it the 'wireless' and it ran on a six volt battery which went flat in time and had to be taken to the garage to charge which took nearly 24 hours. We only had it on when the family could all listen. There was no Pop bands but some dance bands.



NAREMBEEN HISTORICAL SOCIETY (INC)

FINAL AROUND THE HOME

What sort of appliances did you or your mother use in the kitchen when you were a child that are no longer used today? What were they used for?

Flat irons (ironing the clothes), Coolgardie safe (keeping things cold), Copper (for boiling clothes in), wash board (for scrubbing clothes), Kerosene or paper bath heaters , gauze toasters (making toast on wood stove), wood stove (for all cooking), hand mincer (meat or vegetable mincing)



What were your favourite hobbies to do? What did you do after school and on the weekends?

When about 6-8years we sometimes built cubbies at home or in the bush area and all the kids set traps for rabbits which were sold for pocket money. As we got older we played sport or rode our bikes. Most of the children went to Sunday school on Sunday mornings.



Lorraine Parrots birthday party.
All the girls were invited.

What was the farming life like? Was it hard?

Farming life was hard for kids especially during the Depression years. Always had jobs to do before and after school and weekends, also they either walked to school or horse and buggy.

What was the weather like? Was it similar to the weather now? How often did it rain?

The weather was similar to now, the seasons have shifted a bit. We had more dust storms and the rain was as unpredictable as now.

Grader Contracting

For all your grader requirements in Narembeen and surrounds.



Contact Digby Slade
0428635055 or 9063 5055.



For all your mobile heavy and light vehicle mechanical servicing, repairs and air conditioning requirements.

Contact Zac Fagan
0428 340 606

ABN 626 293 883 34
Refrigerant trading authorization
AU 53806

KLF Horsemanship & Rider Coaching

Kerry Fullbrook - 0474 125 515

Bruce Rock, WA

Rider Coaching and Horse Training

I provide coaching services to all levels and disciplines of horse riding. I specialise in confidence building and foundation training. I am fully mobile and can come to you.

I have very limited places available if you would like to learn on one of my school masters.

I have places available for training your horse whether that be foal handling, pre starting, foundation training, pre-sale prep or brining back into work.

Mobile coaching on Saturday and Sunday, Lessons are very limited.

Lessons are available from 12th of November 2022

FB page - <https://www.facebook.com/KLFHorsemanshipRider.Coaching/>

For more information, reviews and up to date news



Country Stargazing

with Carol Redford and Donna Vanzetti, Astrotourism WA

A Total Eclipse of the Moon! Coming to Your Skies 8th November!

For natural cosmic phenomena, you don't get more remarkable than a Total Lunar Eclipse!

A total lunar eclipse occurs, when the Sun and Moon are perfectly aligned in their orbits, with the Earth in the middle. As the Moon travels around the far side of the Earth, it passes directly into the shadow of the Earth.

Why does the Moon turn Red?

To add to the magic of it all, the Moon turns a coppery-red during a total eclipse, earning it the nickname of 'Blood Moon'. As the Moon passes into the full shadow of the Earth, called the umbra, the Sun's light passes through the atmosphere of our planet and is scattered, losing most of the blue light. This means that the light that reaches the lunar surface is predominantly red in colour. This effect is known as Rayleigh Scattering and this is also how our sunsets are created.

When to look: From 7.00pm to 8.50pm, 8th of November.

Which direction to look: In WA, the Moon will rise, mid-eclipse, starting low in the eastern horizon.

Enjoy the magical transformation of the bright full Moon into a slowly darkening coppery ball, hanging mysteriously in space.

Another colourful grouping occurs on the 11th of November with Mars forming an Orange Triangle with two red super giant stars, Betelgeuse and Aldebaran. The Moon lies right next to Mars, adding to this special spectacle.

When to look: After 10pm, on the 11th of November.

Which direction to look: North-east.

Enjoy these confetti of colour in the night sky.

Find more stargazing tips and country events at www.astrotourismwa.com.au.

If you're a budding "astro-enthusiast", check out...

Stargazers Club WA's telescope classes & astronomy events for beginners at:
www.stargazersclubwa.com.au.



Narembeen CRC Update

Hello everyone! I am officially back!!

I have survived my first week back in the office and back to reality.

The Stronger Community Program commenced last week and it was a great start with over 15 women attending. The program runs twice a week for 6 weeks and everyone is welcome to attend. To view times please join the Facebook Group 'Stronger Community Program Narembeen'.

Story Time is back this Friday!! We are looking forward to seeing the little ones back at the library!

After finding my way through the 500 emails I received while on leave, we also had some great news - We were successful with our application for the 2022 WA Seniors Week Community Grant.

Seniors Week takes place annually in November as a chance to celebrate older adults in WA for their valuable contributions in our community.

Narembeen will celebrate its seniors with a free event on Monday, 7 November. Thank you to COTA (WA) and the Department of

Communities we will be enjoying a FREE day at the cinema, watching the new George Clooney & Julia Roberts comedy in Merredin followed by a lovely lunch. Please RSVP to the CRC by next Thursday, 4 November. We hope you all will enjoy a wonderful event.

We have some other exciting events coming up in November and December with Astro Tourism visiting Narembeen for a guided tour of the night sky and Fair Game also coming back to Narembeen to bring some sporting activities to our local kids.

We are also currently in the planning stages of the Christmas Street Party. We will be asking for market stall holders to join the day so if this is something you are interested in please let us know.

For now, I hope you all have a great week!

Vanessa King
CRC Manager

T 9064 7055

Unit 2 /19 Churchill Street, Narembeen WA 6369

crcreception@narembeen.wa.gov.au

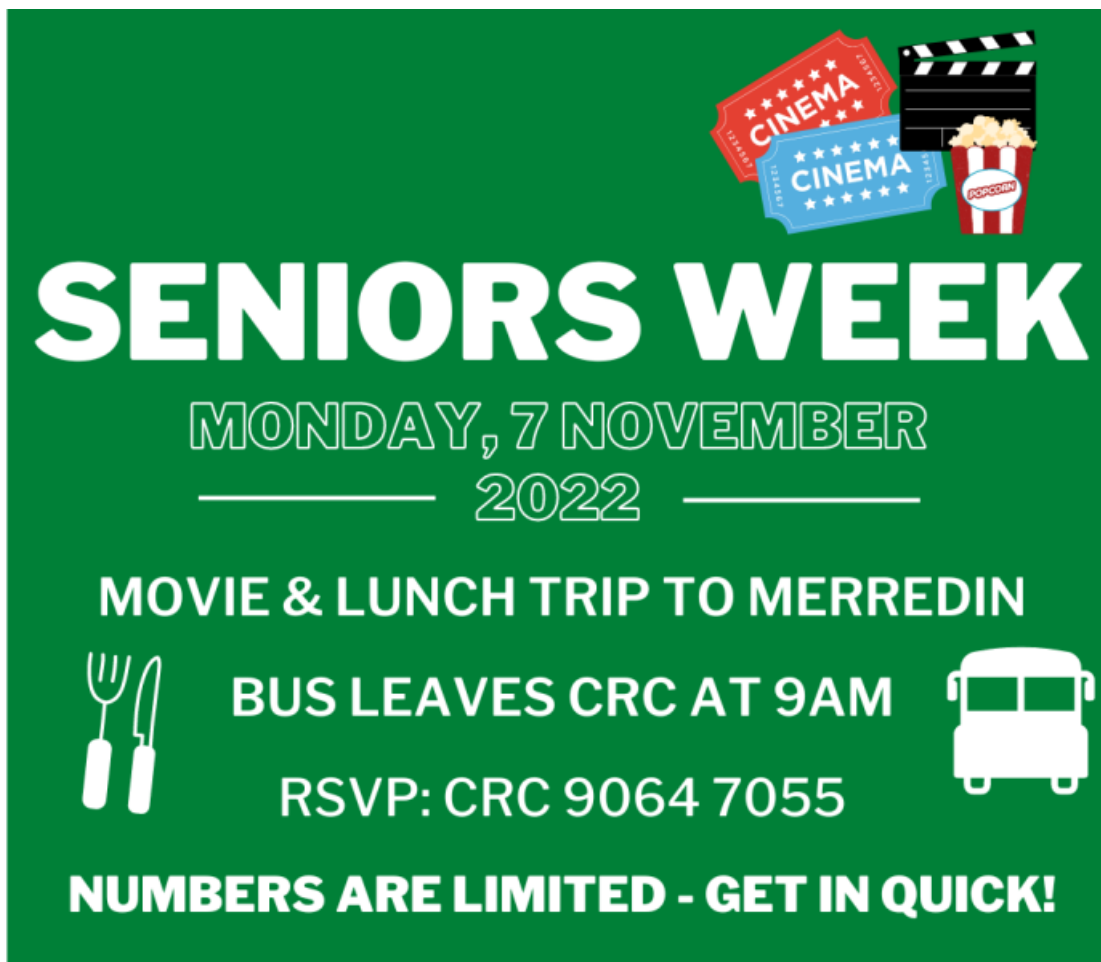
www.narembeen.wa.gov.au

 Narembeen Community Resource Centre

 Narembeen CRC

Upcoming CRC Events 2022

- Stronger Community Program: Tue, 18 Oct - Thur, 24 Nov
- Story Time: Fri, 28 October 10.30am
- Seniors Week Event - Movie & Lunch Trip: Mon, 7 Nov 9.00am
- Morning Coffee Club: Wed, 16 Nov 10.00am
- Stargazing Night: Fri, 18 Nov 6.00pm
- Fair Game Visit: 3/4 Dec
- Seniors Movie: Mon, 5 Dec 1.00pm
- Christmas Street Party: Fri, 16 Dec 3.30pm



The poster features a green background with white text and icons. At the top right, there are icons for two cinema tickets (one red, one blue), a clapperboard, and a bucket of popcorn. The main text reads 'SENIORS WEEK' in large, bold, white letters, followed by 'MONDAY, 7 NOVEMBER' and '2022' in a smaller, outlined font. Below this, it says 'MOVIE & LUNCH TRIP TO MERREDIN'. To the left of 'BUS LEAVES CRC AT 9AM' is an icon of a fork and knife, and to the right is an icon of a bus. The text 'RSVP: CRC 9064 7055' is centered below the bus icon. At the bottom, it says 'NUMBERS ARE LIMITED - GET IN QUICK!' in bold white letters.

SENIORS WEEK
MONDAY, 7 NOVEMBER
2022

MOVIE & LUNCH TRIP TO MERREDIN

BUS LEAVES CRC AT 9AM

RSVP: CRC 9064 7055

NUMBERS ARE LIMITED - GET IN QUICK!



Supported by



Government of Western Australia
Department of Communities



FAIRGAME

recycling sports equipment inspiring healthy communities.

VISITS NAREMBEEN



SAT 3 DEC: 10.30AM - 2PM

SUN 4 DEC: 9AM - 12PM

- MEET ON THE OVAL -



SPORT, GAMES AND PRIZES TO BE WON!

HEALTHY FOOD ALSO PROVIDED!

- SUITABLE FOR YEAR ONE AND UP! -



BOWLS NEWS

Sunday saw the men have 6 teams playing their Championship Fours. No results as yet due to the rain stopping play. Thank you to our sponsors of this event Max Price Family and Narembeen Hardware. A small group of ladies had a roll until the weather turned them to the Club for some socialising.

One team of Ladies headed for Tammin on Saturday for their open day. Anita, Sylvie, Helen and Narelle didn't finish in the winners circle but they did come away with a round win, Anita a skipper win, Helen and Narelle each won a raffle and Sylvie and Helen had a money board win.

On Wednesday the Ladies had a great pennant win to Corrigin G. 4-0. Much celebration was held that evening. Hopefully this week they will replicate the win now they remember how it's done.

Both Men's teams had a win on Saturday.

Ladies Pennants this Wednesday with Narembeen playing Westonia away.

A. Cowan	N. Vaughan	S. Heather	M. Campbell
H. Copeman	K. Mortimore	M. Miolini	J. Hayter

Mens Pennants are away also at Corrigin this Saturday.

Maroon	D. Hayter	A. Cousins	D. Campbell	C. Butler
	M. Hall	J. Padfield	W. Cowan	F. Copeman
	G. Vaughan	K. Anderson	A. Hardham	A. Lyon
	M. Currie	G. Johns	S. Padfield	C. Duncan
Gold	E. Tenardi	T. Cole	B. Parsons	Hen. Cowan
	J. Currie	R. Hayter	R. Arnold	Hal. Cowan
	R. Gray	A. Yandle	R. Gill	J. Cole
	S. Welsh	N. Rogerson	K. Butler	B. Cole

This Sunday in the fixtures Men— Corrigin Fours, Mixed Social at home
 Ladies— Civic Open Day, Mixed Social at home

Don't forget subs are due. Not many outstanding so to keep the Treasurer happy, please pay.

\$160 Full—\$120 Pensioner—\$60 Social

BSB 306 -026 Account 4179833

The Bowling Club will be hosting a New Years Eve event at the Rec Centre.
 Bowls commencing at 4pm more info in the weeks to come.

THANK YOU to our SPONSORS.

Stephen & Chris PADFIELD, Hendy & Anita COWAN, Barry & Noela COLE, Frank & Helen COPEMAN, Tony & Di MIOLINI, Maisie CUSACK, Crichton Vale, Rhonda COLE, LIBERTY OIL, Robert & Julie HAYTER, ELDERS RURAL, Narembeen IGA, Barry PRICE & Family, TRADE MARKS ATTORNEY SERVICE, GO NAREMBEEN and MACA Mining.





A car pool trip to Kulin did not end well for team Mt Walker, going down to 2nd on the ladder, Kulin. Despite the shelacking from Kulin a good hit was had with Trent taking out the King of Mt Walker title and enjoying his reign while Jessie was away. A bit of bark off (innocently) for some on the way home on slippery gravel and a chance encounter with the Hyden team for a roadside catch-up (and possibly investigation into their strategies to give us some advantage when we meet them). Saturday proved to be a tough but fun day. Mt Walker is up against Hyden 2 this weekend and hoping for a win!

Kulin 20/161 def Mt Walker 12/123

Team: Pete Cowan, Indi Miolini, Guy Bormolini, Kara Morrone, Michael Morrone, Shohan Hickey, Trent Davis, Alex Holland

King of Mt Walker with 4 sets – Trent Davis



Social started off well with a few courts on, but after 2 rounds the rain set in and all retired to the club rooms to enjoy the ding snag and nibbles night. An early evening and a lot of hope that the rain might help some of the later crops. Members are looking forward to the Doubles Champs this Saturday followed by a Mexican Feast!

The Mt Walker Sports Club fundraising committee is seeking paddocks for skeleton weed searching again this year. If you have any available please contact Michael Morrone 0428 346 679.

COMING EVENTS:

Saturday 29 October	Pennants Rd5 Hyden 2 vs Mt Walker
Sunday 30 October	DOUBLES CHAMPIONSHIPS – Mexican Night
Saturday 5 November	Pennants Rd6 Mt Walker vs Hyden 1
Sunday 6 November	MT WALKER OPEN DAY

SUBS DUE NOW (Tennis Members)

Full \$120 Social \$60 Junior \$35

Please pay by cheque, cash or EFT to: Mt Walker Sports Club, BSB 306 026, Account No. 5100512
Use surname and initial as narrative

*** NEW MEMBERS WELCOME ***

Ladies Captain: Courtney Bormolini 0488 333 492 **Men's Captain:** Michael Morrone 0428 346 679 **Secretary:** Felicity Cowan 0428 191 083



BUILDING BRAINS TOGETHER
IN NAREMBEEN

STORY AT THE CRC
TIME

AGES 1-5

★ **STORIES**

★ **FUN GAMES**

★ **ARTS & CRAFTS**



JOIN US IN THE
LIBRARY AT 10:30 am

****Children must be accompanied by an adult****

Friday, 28 October 2022





NAREMBEEN—EDCA Rd 2 results

Narembeen 10/205 def Kondinin-Kulin 10/102 Yilgarn 10/108 def by Nukarni 4/109

Narembeen 10/205

R Cousins 108

M Poultney 29

S Jham 22

S Ellis 3/40 10 overs

B Whyte 2/43 10

Defeated Kondinin-Kulin 10/102

S Ellis 30

G Yandle 25

S Jham 3/27 7overs

N Cheetham 3/12 3overs

Team: James Kennedy, Rhys Cousins, Danny Gray, Thomas Baldwin, Satwant Jham, Nate Dench, Heath Spinks, Nick Cheetham, Matt Poultney, Stuart Yandle, Will Shepherd, Toby Bald 12th man.

Welcome to a couple of new players for the cricketing Hawks, Satwant(Sat) Jham one of the roadhouse crew big first game taking a few wickets and making a few runs.

Cheers to Heath Spinks, Nate Dench and Will Shepherd for having a crack at cricket also.

Before the match commenced both teams and spectators observed a minutes silence in memory of Don Cheetham.



The Narembeen Cricket Club offers condolences to Duncan, Gillian, Bronwyn and the Cheetham family on the passing of Don (Dell) Cheetham, a Patron and Life-member of the BRNCA and a proud and passionate supporter, coach and player for the Narembeen Cricket Club. RIP Dell.

This week we play Hyden-Karlgarin in Karlgarin.



from the CHIEF



1 LONGHURST STREET, NAREMBEEN WA 6369 T: (08) 9064 7308 F: (08) 9064 7037

W: www.narembeen.wa.gov.au E: admin@narembeen.wa.gov.au

EMERGENCY PREPAREDNESS

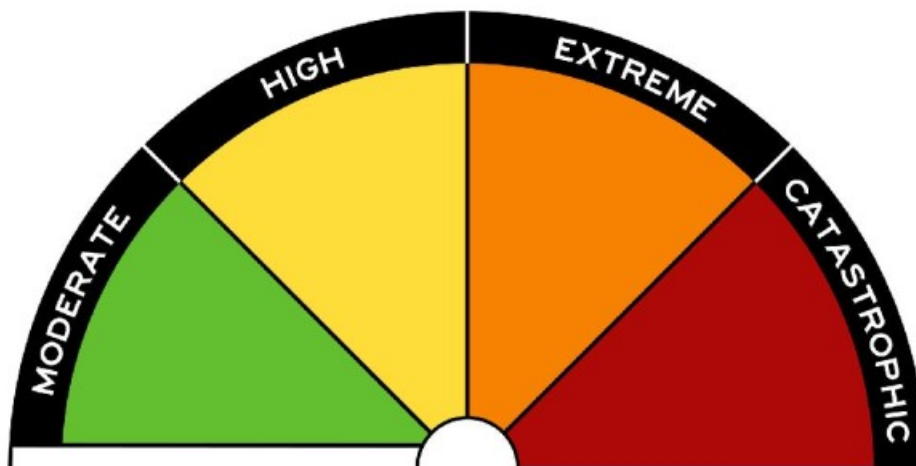
Shire of Narembeen, together with DFES will host two community workshops with a focus on Emergency Preparedness

3pm and 6pm on WEDNESDAY 26 October 2022
at Narembeen Recreation Centre

Topics covered include:

- The new AFDRS – Australian Fire Danger Rating System and what each forecast means for community members.
- DFES Warnings - Emergency, Watch and Act, Advice and what do each mean.
- Evacuations - How they are they called? What does this mean? Where do you go and when? if you need to leave, are you prepared with what you need?

To RSVP your attendance or find out more information, please email admin@narembeen.wa.gov.au or call 9064 7308 [Control of dogs in certain public places](#)



from the CHIEF

COUNCIL WRAP UP—October 2022

Light Industrial Area

Council resolved to recommend the WA Planning Commission approve the application for the subdivision of lot 100 Narembeen South Road subject to conditions. Full details available in the minutes.

Local Government Reform

Council considered the response to the Minister regarding the number of local Council Member seats available at the next election. Council have resolved to advise the Minister of its support for the Voluntary Pathway, to determine the number of Councillors moving forward.

Management of Volunteer Bushfire Brigades

In consideration of the preferences of both the local Volunteer Brigade, and the position of DFES, Council have resolved to continue to manage the Narembeen Volunteer Bush Fire Brigade

Transfer of Assets – Skeleton Weed Program

With the Shire of Goomalling taking on the Skeleton Weed programs from around the Region, Council have resolved to begin the process of transferring any assets to the Shire of Goomalling and adjust the 2022-2023 Annual budget accordingly.

Mt Arrowsmith Road

Council have resolved to contribute to the cost of repair of the Mt Arrowsmith Road providing the repairs are designed and undertaken to an acceptable level, by suitably qualified and experienced contractors.

Minutes available on the website www.narembeen.wa.gov.au

Council 2002

Council observed one minutes silence in remembrance of the victims of the Bali Bombings which had occurred 4 days earlier.

Several members of the then Narembeen – MGM bushfire brigade were nominated by the Fire and Emergency Services Authority of Western Australia to receive a National Medal or Service Clasp.

We were still sending faxes in 2002!

from the CHIEF

COMMUNITY GYM - ELECTRICAL WORKS

Maintenance will be undertaken at the Community Gym this week.

These works have been scheduled for **Friday 28 October 2022** between 7am and 6pm and the gym will be closed during this time.

We apologise for any inconvenience.



GYM IS CLOSED

OFFICE CLOSED

Shire of Narembeen Administration Building and CRC will be closed **Wednesday 26 October 2022** between 8.30am and 12.30pm for staff training.

Please call 0428 647 312 in case of emergency.

RESTRICTED BURNING PERIOD (permit required)

Restricted burning period is now in place until 31 October 2022. This may be extended.

Burning period dates may be varied due to climate or weather conditions. Variations will be advertised via SMS, the Shire website and Facebook page.

The following Fire Control Officers (FCO) are authorised Fire Permit Issuing Officers:

- Murray Dixon – Chief Fire Control Officer (08) 9064 5026
- William Cowan – Deputy Chief Fire Control Officer (08) 9061 6012
- Joel DeLuis - Fire Control Officer (East Sector) 0427 617 013
- Trevor Cole – Fire Control Officer (West Sector) (08) 9064 7038
- Mitch Miolini – Fire Control Officer (North Sector) 0458 000 931
- Alan Yandle - Fire Control Officer (Central) (08) 9064 7362
- Andy Hardham – Fire Control Officer (Central) (08) 9064 7302

The people listed above are able to issue burning permits and inform you of the laws and dates in regard to burning and required conditions. Community members may also contact the Shire Office (08) 9064 7308 during office hours if you cannot contact the listed Officers.

MOSQUITO FOGGING

With all of this rain, comes mosquitos. Mosquito Fogging will commence through until summer.

It is important to stop the reproductive cycle of the mosquito and fogging is dependant on weather, sometimes the truck may be out more nights than others.



from the CHIEF

RECRUITMENT

Executive Manager Corporate Services

Shire of Narembeen is the hub of the community and highly values its role as a vital and innovative organisation. The Shire is seeking to employ an Executive Manager Corporate Services who will be responsible for the preparation and management of the Shire's financial reports and annual budget, supervision of staff and to be involved in many exciting projects for the sustainability of our community.

To be considered for this exciting position you will have a tertiary qualification in finance along with substantial experience in financial management and reporting. Previous experience in Local Government is highly desirable but not essential.

A remuneration package between \$132,750pa - \$155,650pa inclusive of a cash component, to be negotiated with the successful candidate includes generous benefits such as an executive home, motor vehicle with private use and much more.

To apply please contact David Blurton, Chief Executive Officer on (08) 9064 7308 or admin@narembeen.wa.gov.au to obtain an Application Package.

All applicants **must** address the Selection Criteria as detailed in the package.

Applications close at 5:00pm on Monday 21 November 2022

Customer Services Officer

The Shire is also seeking the services of a positive and organised Customer Services Officer. This role may be considered as a part time role, to be determined with the right candidate.

This six month contract is available full time or part time, dependant on availability.

Role involves administration support and front counter duties.

This position is a Level Three position (\$26.58) plus 25% casual under the LG Officers Award.

To apply for this role, please submit a resume and cover letter to emcs@narembeen.wa.gov.au or in person at the Shire Administration Office.

Applications close at 5:00pm on Friday 25 November 2022



Fire Danger Ratings and Bushfire Warnings

- **Fire Danger Ratings describe the potential level of danger should a bushfire start.** They provide important information so you can take action to protect yourself and others from the potentially dangerous impacts of a bushfire. You need to understand the Fire Danger Rating to assess your level of bushfire risk and decide what actions to take.

The new Australian Fire Danger Rating System (AFDRS) levels are:

Moderate: Plan and prepare.

Most fires can be controlled. Stay up to date and be alert for fires in your area.

High: Be ready to act.

Fires can be dangerous. Decide what you will do if a fire starts. Leave bushfire risk areas if necessary.

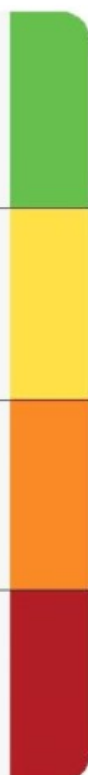
Extreme: Take action now to protect your life and property.

Fires will spread quickly and be extremely dangerous. Put your bushfire plan into action. If you and your property are not prepared to the highest level, plan to leave early.

Catastrophic: For your survival, leave bushfire risk areas.

These are the most dangerous conditions for a fire. Homes cannot withstand fires in these conditions and if a fire starts and takes hold, lives are likely to be lost. Stay safe by going to a safer location early in the morning or the night before.

- When there is minimal risk, Fire Danger Ratings will be set to **'No Rating'**. On these days you still need to remain alert and abide by local seasonal laws and regulations.



This publication is intended to be a guide only. While every effort is made to ensure accuracy at the time of publication, DPFS makes no representation about the content or suitability of the information provided. DPFS expressly disclaims liability for any act or omission, done or not done in reliance on the information and for any consequences whether direct or indirect, arising from such act or omission.

JUNE 2022/11C



Fire Danger Ratings and Bushfire Warnings

➤ **When a bushfire starts, things can change in a matter of minutes so it's important to stay up to date through official information sources.**

During a bushfire, emergency services will provide you with as much information as possible, but no system is foolproof. If you believe you are in danger, act immediately to stay safe and do not wait for a warning.

If you see smoke or flames call Triple Zero (000) and put your bushfire plan into action immediately.

Bushfire warning levels change to reflect the increasing risk to your life or property, and the decreasing amount of time you have until the fire arrives.

The warning levels for bushfires are:

Advice	Watch and Act	Emergency Warning	All Clear
			
A fire has started but there is no immediate threat to lives or homes. Be aware and keep up to date.	There is a possible threat to lives or homes. You need to leave or get ready to defend – do not wait and see.	There is a threat to lives or homes. You are in danger and need to take immediate action to survive.	The danger has passed and the fire is under control. Take care and remain vigilant in case the situation changes.

Where to find ratings and warnings:

- Emergency WA emergency.wa.gov.au
- DFES Emergency Information Line 13 DFES (13 3337)
- ABC Radio or 6PR - Your local radio frequency
- DFES Facebook facebook.com/dfeswa
- DFES Twitter twitter.com/dfes_wa



Make a plan

Dangerous bushfires can start at any time and can quickly turn into a life-threatening situation for you and your loved ones. Your safety will depend on how prepared you are and the decisions you make.

Create a bushfire plan in under 15 minutes at mybushfireplan.wa.gov.au

For more information visit dfes.wa.gov.au/prepare

This publication is intended to be a guide only. While every effort is made to ensure accuracy at the time of publication, the publisher makes no representation about the content or suitability of the information provided. It expressly disclaims liability for any act or omission done or not done in reliance on the information and for any consequences, whether direct or indirect, arising from such act or omission.

JUNE 2022/V10



from the CHIEF

FIRE BREAK ORDER 2022/2023

Pursuant to the powers contained in Section 33 of *Bushfire Act 1954*, you are hereby required on or before **31 October 2022** to plough, scarify, cultivate, spray or otherwise clear and thereafter maintain free of all inflammable matters until **15 April 2023** firebreaks in the following dimensions on the land owned or occupied by you.

Rural Land

Firebreaks 2.5 metres wide as follows:

Immediately adjacent to and surrounding all cleared land subdividing all cleared land into areas no greater than 400 hectares. Surrounding each building, haystack, fuel dump or ramp.

Townsite Land

Firebreaks 2.0 metres as follows:

Vacant lots in excess of 1,025 sq metres as follows:

- All lots containing less than 2,025 sq metres on boundaries and immediately surrounding all buildings.
- Remove all flammable material from fuel dumps or liquid fuel containers to a distance of 15 metres.

The penalty for failing to comply with this Notice is a fine not exceeding \$5000 and a person in default is also liable whether prosecuted or not to pay the costs of performing the work directed by this Notice if it is not carried out by the owner and/or occupier by the date required by this Notice.

By order of Council.

David Blurton
Chief Executive Officer
Shire of Narembeen

OFF LEASH DOG EXERCISE AREAS

Following several incidents recently with members of the community walking dogs off leash in public areas and not having effective control of the dog, the Shire of Narembeen is now considering designated off leash exercise areas.

Feedback is invited regarding location of such areas. Please send your thoughts to emcs@narembeen.wa.gov.au

The rangers will continue to ensure compliance with regulations in the Dog Act and infringements will be issued.

from the CHIEF

COUNCILLOR NUMBER REVIEW

The Minister for Local Government has announced a package of reforms to the *Local Government Act*. As part of the reforms to strengthen democracy and increase community engagement, The Minister proposes to review Councillor numbers based on population.

Shire of Narembeen is undertaking a review of its Councillor numbers and feedback received through this consultation process will assist the shire to transition to the new requirements. As a resident, your input is highly valued, and the Shire is seeking feedback from you on the following options.

- ◆ Option 1- Reduce the number of council members to seven at the next election (2023)
- ◆ Option 2- Reduce the number of Council members to five at the next election (2023)
- ◆ Other suggestions are welcome.
- ◆ If you would like to see a reduction in the number of council members, why?

Members of the community are invited to make a written submission about any aspect of the representation review and lodge it at the Shire or by email at admin@narembeen.wa.gov.au

All submissions must be received by 5pm on 2 December 2022

A full discussion paper has been prepared and can be accessed on the Shire of Narembeen's website at www.narembeen.wa.gov.au.

Information on the reform process itself can be located at <https://www.dlgsc.wa.gov.au/local-government/strengthening-local-government/local-government-act-reform>.

Thank you for your interest and involvement in this review. Council welcomes your comments on any matters that may assist it to make informed and responsible decisions for the benefit of the people of the Shire of Narembeen.

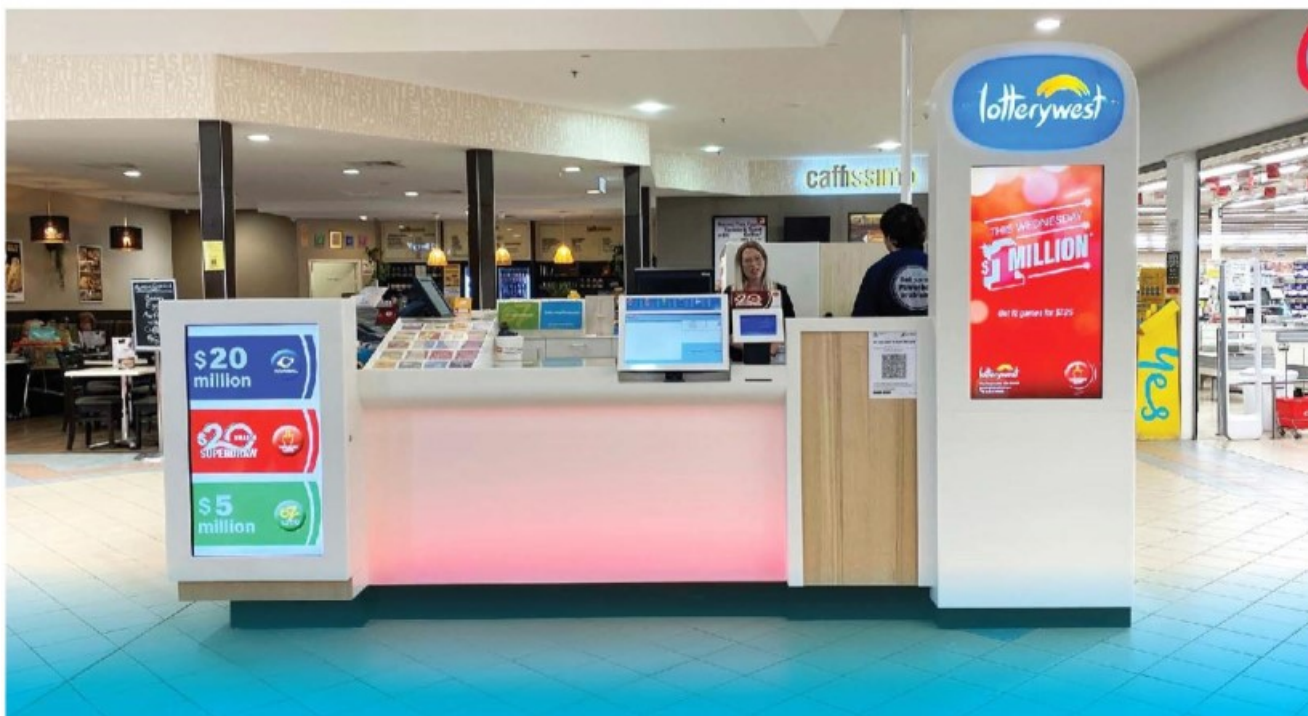
Councillor Kellie Mortimore

SHIRE PRESIDENT

David Blurton

CHIEF EXECUTIVE OFFICER

from the CHIEF



Become a Lotterywest retailer

Imagine being part of a business where every time you sell a ticket, you're helping to build a better Western Australia. We are seeking enthusiastic individuals who are passionate about Lotterywest games, business development, and serving the WA community to establish and operate a new outlet in Narembeen.



Narembeen

Interested in applying?

Visit lotterywest.wa.gov.au/becomearetailer or call us on 133 777 for eligibility criteria and information on how to apply. Expression of interest applications must be received by 5pm, Thursday 10 November 2022.

Play Responsibly

gamblinghelponline.org.au 1800 858 858



from the CHIEF

RAMELIUS RESOURCES & SHIRE OF NAREMBEEN COMMUNITY BENEFIT FUND



Applications Open - 1 October 2022

Applications Close - 31 October 2022



APPLICATION FORMS available from

Shire of Narembeen or www.narembeen.wa.gov.au.

For more information contact Diana Blacklock at edo@narembeen.wa.gov.au

WILLWAY PLUMBING & GAS

Dean: 0407762543

Email: dean@willwayplumbing.com

PL9957 GF18322



Brownley's Plumbing & Gas

Gas Licence# GF8292

Plumbers Licence# PL6574

ABN# 81 363 273 168

We specialise in:

Hot & cold water services

Drainage, Sanitary, Gas fitting &

Solar heating installations and maintenance

For all your plumbing & gas fitting requirements call

Gavin Brownley

M: 0429 611 906

P/F: (08) 9061 1906

E: gavinbrownley@gmail.com

54 Dampier Street, Bruce Rock WA 6418

PO Box 137, Bruce Rock WA 6418

CHRIS BRAY ELECTRICS

ACN 009 023 223 EC 349

0418911872

facets@inet.net.au

14 Longhurst Street Narembeen

For all electrical installations repairs
and maintenance.



R2K Contracting

Hydraulics Sales & Service

Hydraulic Component's Sales ex supplier

Richard Kovac & Robyn Kovac
21 Westral Street (PO Box 30)

Bruce Rock WA 6418

Richard 0427 851 870

Robyn 0400 552 141

Fax: 08 9061 1194

ABN: 16 563 552 915

E-mail: rdkovac@bigpond.net.au

Hydraulic system design and testing

Hydraulic Components Repairs in house

Fully equipped service vehicle - will travel

Mobile hose/fitting trailer for onsite repair

Hydraulic hose assembly made to order, in-house

Regular trips to Perth for repairs & parts



WHEATBELT EQUIPMENT

DEALER FOR

JCB - GOLDACRES - MARSHALL MULTISPREADER
POTINGER - HIMAC - WONGAN STEEL CHASER BINS



SALES, PARTS & SERVICE

CALL: (08) 6414 6000

SALES: WAYNE STONER 0427 084 330

PARTS & SERVICE: DON LAIDLAW 0408 220 907



NAREMBEEN NIGHT SKY ADVENTURES

Explore the Universe at Narembeen! Marvel at their world-class night skies as you view the incredible gas giant planets, Jupiter and Saturn.

Astronomy Guides will take you on a cosmic adventure, using a laser pointer to point out the constellations and look through telescopes to see the wonders of the cosmos

Discover why Narembeen is the place for visitors seeking stargazing experiences.

Friday, 18th November 2022

7.30pm – 10.00pm | Why Narembeen is Perfect for Dark Sky Tourism Presentation, Laser Tour of the night sky and Stargazing through telescopes.

Venue: Narembeen Recreation Centre/Narembeen Oval

Friday Night Dinners available at Rec Centre 6.00pm - 7.30pm.
BYO chairs, rugs, picnics, drinks, torches, warm clothes, fly net, insect repellent.

Bookings: Free community event. Please RSVP to Narembeen CRC by calling 9064 7055. This event will go ahead rain, hail or shine.

Narembeen is on the Astrotourism WA map! www.astrotourismwa.com.au

This event was made possible with funding from the Shire of Narembeen. It is part of the Astrotourism WA project that's promoting Narembeen as a destination for stargazing and astrophotography. www.astrotourismwa.com.au

NAREMBEEN
RECREATION CENTRE





Kaylor Andrews
Wheatbelt Regional Education Officer
Cancer Council Western Australia
Kaylor.Andrews@cancerwa.asn.au

October is Breast Cancer Awareness Month

Did you know?

Breast cancer is the most common cancer affecting women in Western Australia, though men can also develop breast cancer.

In 2019, 1,890 Western Australian women were diagnosed with breast cancer, accounting for almost a third of all female cancer cases, and sadly 252 women in WA died from the disease.

Common symptoms of breast cancer include:

- A lump or hard area in your breast or underarm, especially if it is only on one side
- A change in the size, shape or feel of your breast
- Change in the look of your breast, like: your skin looks like the skin of an orange, your skin is wrinkling in small folds, redness or rash.
- Changes to the nipple, like it's: pulled inwards, leaking, itchy or has a sore that won't heal
- Breast pain or discomfort, especially if it is only on one side
- An area of the breast that feels different to the rest.



Get to know your breasts and what's normal for you and if you notice any unusual changes tell your doctor, clinic nurse or Aboriginal health worker. If it is breast cancer, the earlier it's found, the greater the chance of successful treatment. Please visit www.findcancerearly.com.au for more information about breast cancer.

Screening for breast cancer

Women aged between 50 and 74 are invited to access free screening mammograms every two years via the [BreastScreen Australia Program](#).

It is recommended that women with a strong family history of breast or ovarian cancer, aged between 40 and 49 or over 75 discuss options with their GP, or contact BreastScreen Australia on 13 20 50.

If you do not have any symptoms then it is highly recommended to partake in the program. However, if you are experiencing symptoms, instead visit your doctor without delay.

Visit <https://www.cancer.org.au/cancer-information/causes-and-prevention/early-detection-and-screening/breast-cancer-screening> for more information.

TRY THIS: Healthy Prawn and Avocado Rice Paper Rolls Recipe

- 50 g rice noodles
- 150 g snow pea, ends trimmed
- 1 large avocado, peeled and stoned
- 12 rice paper rounds (22cm)
- 18 cooked prawns, shelled, deveined and cut in half lengthways
- 1/3 cup mint leaves
- 1/3 cup coriander leaves
- 1 large carrot, peeled and grated
- 1/3 cup sweet chilli sauce

View this recipe [here](#) or search it at livelighter.com.au



For cancer information and support call 13 11 20





Hon Mia DAVIES MLA

Member for Central Wheatbelt
Leader of The Nationals WA
Leader of The Opposition

MEDIA RELEASE

NOT FOR PROFIT AND NEED TO REDUCE YOUR POWER BILLS?

20 October 2022

Member for Central Wheatbelt Mia Davies MLA is encouraging Central Wheatbelt not-for-profit and charity organisations to apply for the latest round of Synergy's *Community Giving Fund*.

The fund sees eligible local community groups and charities gifted a solar PV system to help them reduce electricity costs.

Ms Davies said it was an opportunity to receive up to \$10,000 in infrastructure, reduce power bills and free up valuable dollars for the not for profit or charity to reinvest in the community.

"It would be great to see a Wheatbelt organisation receive this assistance and I encourage eligible organisations to apply," Ms Davies said.

"My electorate office is available to assist with the application should smaller groups or volunteers require support."

Community organisations, not-for-profits and charities based in, or delivering services, in the Synergy footprint from Kalbarri in the north, to Kalgoorlie in the east, and to Esperance in the south are able to apply.

Applications will need to be able to demonstrate alignment to at least one of Synergy's key themes, identify who will benefit from the funded activity, and how the organisation will measure their outcomes.

Applications must be submitted by 28 October 2022.

For further information visit:

<https://www.synergy.net.au/About-us/Community-Investment/Community-Giving-Fund>

For media enquiries please contact Mia Davies on 9041 1702 (Merredin office), 9622 2871 (Northam office) or email mia.davies@mp.wa.gov.au.

mia.davies@mp.wa.gov.au

 MiaDaviesMLA  facebook.com/MiaDaviesMLA
 @miadaviesmla www.miadavies.com.au

THE NATIONALS for Regional WA

Birthdays



OCTOBER

26th	Cathy Hassett	George Lines (21)	
27th	Valerie Wardley (Schwartz)	Cameron Parsons	Ben Main
28th	Tanya Forrest	Cory Schwartz	Abbey Noble
	Eamon Wilkes		
29th	Barry Price	John Deluis	
30th	Brendan Parsons	Nicholas Keane	
31st	Shirley Menegola	Brian Slade	Nikki-Lee Fagan
	Peter Hammond		

NOVEMBER

1st	Stephen Moppett	Nola Parsons	Mary Howie
	Keith Miller	Gemma Roddan	Trish Knight

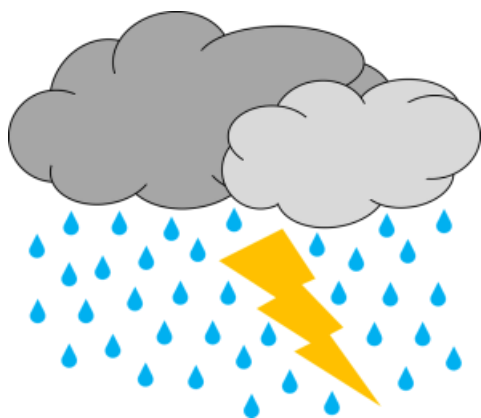
Anniversaries

OCTOBER

31st	Terry & Jacky Chrisp	Doug & Tracey(Doran) McWilliam
------	----------------------	--------------------------------



Weather



Date	Min temp °C	Max temp °C	Rain mm
25-10-2022	11.8	17.1	0.2
24-10-2022	13.7	19.6	28.6
23-10-2022	11.3	26.1	0
22-10-2022	12.4	23.4	2.2
21-10-2022	7.9	24.4	0
20-10-2022	9.9	25.2	0
19-10-2022	9.6	30.6	0



CHURCH NOTICES



ST PAUL'S ANGLICAN

Sunday, October 30

9.30am

Habakkuk Ch1—V1-4, Ch2—V1-4 E. Brayshaw
 2 Thessalonians Ch1—V1-4 & V11-12 R. Hall
 Luke Ch19—V20-31
 Psalm 119—V137-144

Church of Christ

Sunday, October 30

10.00am

Worship Service with Sunday school during the service

Seventh Day Adventist

105 Church Rd, Mt Walker

Saturday, October 29

10:00 am. The Senior's Bible Study lesson for this week is "Resurrections Before the Cross", with the Key Text: John 11:25,26.

Children's Sabbath School too at this time.

11:30 am. Worship, with Merle Phillips reviewing G.C. Chapter 25, "God's Law Immutable".

The current Bible Study series will continue to be on your VAST TV - Channel 603 at 4 pm (Sabbath School Panel) or 7 pm (Let God Speak) on Fridays.

Any queries, please to –

Terry: 0427 907 119, Rhonda: 0417 907 119

Church Pastor, Douw Venter: 0458 552 011

ROMAN CATHOLIC

OUR LADY OF THE BLESSED SACRAMENT

Saturday, October 29

6.00pm

Reader: E. Bailey

Contact: R Hickey 0428 132 454

J Cusack 0408 064 727

Cleaning: J. Cusack

Email: brucerockparish@gmail.com

FaceBook: Francis Mary Concepta Sacrament



COMMUNITY HEALTH INFORMATION



NAREMBEEN MEDICAL CENTRE - PHONE 9064 7145

Dr Lines consults Monday to Friday from 8am to 1pm.
Please phone 90647 145 for an appointment or online with Health Engine

HOSPITAL – PHONE 90646222 HEALTH DIRECT 1800 022 222

Accident, emergency and acute medical.

Outpatient dressing/blood pressure checks etc–Preferred times 10.30am -11.30am or 3.30pm – 4.30pm

X-Ray service available – please phone for bookings. Only emergency X-Rays will be attended out of hours

Other services include antenatal and postnatal care, palliative care, respite service, high and low level residential care. Home and Community Care (HACC), Patient Assisted Travel Service (PATS), Videoconference facilities available for consults with some Specialists. Occupation and Speech Therapy, Dietician and Aged Care Assessment (ACAT) available by referral.

WHEATBELT ALCOHOL AND DRUG SERVICE

Phone 90413807 or 90412928

This service provides support for individuals, couples and families affected by alcohol and drugs

WHEATBELT DOMESTIC VIOLENCE UNIT

Call 1800 353 122 (24 hours) Free and Confidential

Men's Domestic Violence Helpline 1800 000 599. Victim Support Service 1800 350 074

CHILD, SCHOOL AND COMMUNITY HEALTH SERVICES – PHONE 90647388 or 90646222

Child Health Clinic every Tuesday at the Hospital 9am – 3.00pm

Alternatively, contact Primary health in Merredin 90813222 or Ngala 1800 111546

CENTRAL AGCARE FAMILY COUNSELLING SERVICE Counsellor Anne Hague 0427 133 711

PODIATRIST – PHONE 90646222 Please call the hospital (office hours) for appointments

ST JOHN AMBULANCE – PHONE 000 Do not call the hospital for an ambulance in an emergency.

CENTRAL WHEATBELT OCCUPATIONAL THERAPY – PHONE COURTNEY 0488 333 492

At Narembreen Medical Centre

COMING EVENTS

OCTOBER 2022

Wednesday	26th	BOWLS—Ladies Pennants—Westonia v Narembeen Emergency Preparedness @ Rec Centre Shire Offices CLOSED	3.00pm & 6.00pm 8.30am-12.30pm
Thursday	27th	Stronger Community—Boxing Autumn Club	6.00pm 10.00am-2.00pm
Friday	28th	Playgroup at Numbats Centre Mt Walker Sports Club—Cake Stall Storytime @CRC Community Gym CLOSED	9.30am 9.00am 10.30am 7.00am-6.00pm
Saturday	29th	Church Men's Shed Narembeen Tennis—Pennants—Cr v Nb1, Nb2 v Kulin Mt Walker Tennis—Pennants—Hyden 2 v Mt Walker BOWLS—Mens Pennants—CrB v Nb M, Cr G v Nb G CRICKET—Hyden-Karlgarin v Narembeen	See page 36 9.00am
Sunday	30th	Church Narembeen Tennis—Mixed Doubles Championships Mt Walker Tennis—Doubles Championships BOWLS—Ladies—Civic Open Day, Mixed Social @home BOWLS—Men—Corrigin Fours, Mixed Social @home	See page 36
Monday	31st	Circuit Gym Arts and Crafts and Book Exchange at Community Shed	9.30am 10.00am-4.00pm

NOVEMBER

Tuesday	1st	Senior Citizens Stronger Community—Circuit	2.00pm 5.30pm
Wednesday	2nd	BOWLS—Ladies Pennants—Narembeen v Bruce Rock	

Editor: Kellie MORTIMORE